

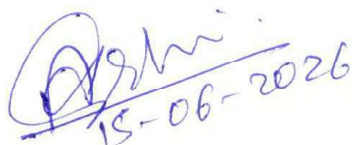
Document No: CEE/01/PQR/140760030

Additional Terms and Conditions for Bidders (including Pre-Qualification requirements)

Supply of "Traction Motor Cable Cleat for KMMC".

S. No	Description of requirement	Document to be attached
1	Bidder should submit a self-declaration stating that, "Offered item is same as per enquiry and there is no deviation".	Self-declaration on letterhead of firm.
2	Contract shall be awarded to only such bidder who had supplied minimum one no. of same or similar indented item to any Public Sector Undertaking, Central Govt sector/ private sector/ Indian railways working for rolling stock application.	PO and corresponding Invoice copy.

Prepared By



Ashwini Kumar
Mgr (CEE)

Approved By



(Sanjay K. Rai)
AGM(CEE)

Technical drawing of a reinforced concrete beam-column joint (LBM) for columns I, V, VII, VIII, and IX. The drawing includes a side elevation and a cross-section.

Side Elevation:

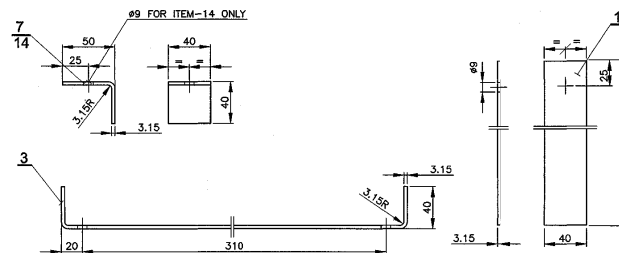
- Overall height: 462
- Overall width: 270
- Reinforcement details:
 - 16 FOR COL.VII & IX
 - 7- FOR COL.I&I&X
 - 14- FOR COL.V
 - 2
 - 1
 - 3
 - 9- FOR COL.I,V&I&X
 - 8
 - 10, 11, 12

Cross-section:

- Width: 40
- Height: 270
- Reinforcement details:
 - 16 FOR COL.VII & IX
 - 7 FOR COL.I, V, VIII & IX
 - 14 FOR COL.V

Labels:

- LBM/M2-7-T-525
- COL. I, V, VII, VIII & IX



④ 09/2006

QUANTITY FOR
ITEMS 1,2,7&14 ADDED
FOR ICF/MRVC/M IN
COL-VIII WITH ASSLY
DRG.NO:
ICF/MRVC/M-7-1-006.

Sd/- Sd/-
SSE/D SEE/D

③	/04
DRAWING REDRAWN IN AUTO CAD.	
Sd/-	Sd/-
SSE/D	AEE/-

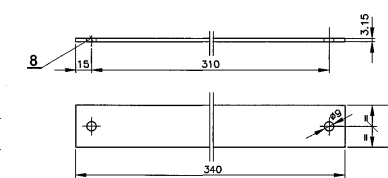
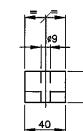
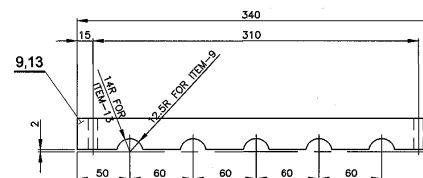
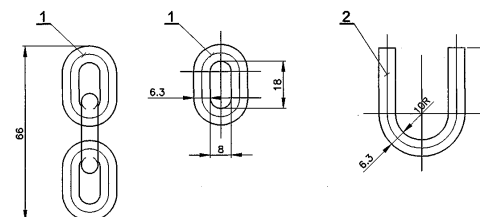
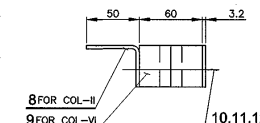
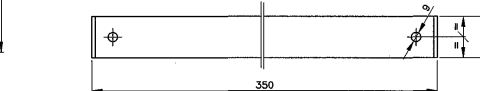
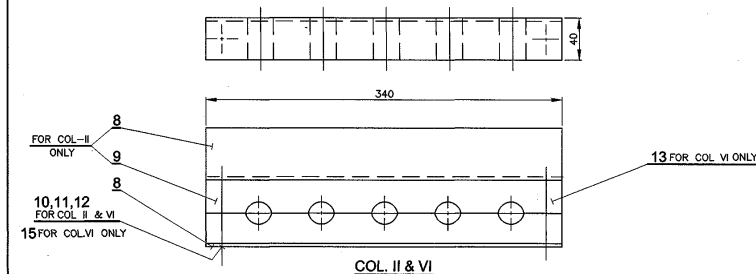
ALTERATIONS	
(h)	QTY IN COL-1 QTY FOR ITEM-1 ALTD FROM 1Q TO 6. REF. DRG FOR ITEM-9 ALTD.
Sd/- SD/ELE	Sd/- AEE/D
(i)	01/2009 COL-IX AND NOTE-3 TO 5 ADDED AND REF.DRG FOR ITEMS-9&13 DELETED AND DRAWING REVISED AND REDRAWN. AS PER SHOP FOLLOW UP. SSE/D

- NO.OFF ASSLY REQUIRED PER COACH

COACH \ COL.	V	VI	VII
(BHEL.) DMC NDMC (MA) NDMC (MC)	2	4	2
(NGEF SERIES) DMC NDMC (MA) NDMC (MC)	6	2	-

COACH \ COL	I	II	III	IV
EMU/M2	4	4	2	2

COACH \ COL.	I	IX
ICF/CFM/ART/CB	9	1
ICF/CFM/DMU/DPC	9	1
DMU/DPC5	7	1
DETC	7	1
JDCC	7	1



NOTE:-

- * 1. CHAIN LINKS OF DIA. 6.3 AS PER IS:2429-70, PART I.
- 2. RM SIZE 3.15 OF IRS.M41-74 GR I SHALL BE USED AS AN ALTERNATIVE TO RM SIZE 3.2 OF IRS.M36
- * 3. FIBRE GLASS REINFORCED PLASTIC FROM SHEET MOULDING COMPOUND OF 25% GLASS CONTENT WITH SELF EXTINGUISHING GRADE HAVING THE FOLLOWING PROPERTIES.

SL_NO	PROPERTY	UNITS	SPECIFIC VALUE
1	SPECIFIC GRAVITY	---	1.75 TO 2.
2	TENSILE STRENGTH	Mpa	60 MINIMUM
3	CROSS BRKING STRENGTH	Mpa	150 MINIMUM
4	COMPRESSIVE STRENGTH	Mpa	150 MINIMUM
5	IZOD IMPACT STRENGTH	JOULE/METRE	450 MINIMUM
6	WATER ABSORPTION	%	0.2
7	INSULATION RESISTANCE AFTER 24 HOURS IN WATER	MEG.OHMS	1000 MINIMUM
8	ELECTRICAL STRENGTH	KV/MM	11

- * 4. TEST METHODS FOR PROPERTIES SHALL BE CONFIRMING TO SPECN. IS:1998-82 TRACKING INDEX & ARC RESISTANCE SHALL BE TESTED AS PER SPECN. IEC 12 & ASTM D-495 RESPECTIVELY
- * 5. TEST FOR FLAMMABILITY SHALL BE AS CLAUSE 3 OF ICF.SPECN.NO ICF/M/D/SPECN.014

* IS:2036-74 Gr.P3 HYLUM
ALTERNATIVELY EPOXY GLAN MOULDED

- * ~~TEAKWOOD ASGUS C TREATED~~
- * NDMC (MC), NDMC (MA) & DM

ICF/CFM/ART/CB, ICF/CFM/DMU/DPC
DMU/DPC5, DETC

2	2	-	-	-	-	-	FLAT	3.15 x 40 x 270	16	IS-5086-92 FE-330			
-	-	2	-	-	-	-	PLAIN WASHER	9	15	IS-1616-67 TAB. 2, TYPE-A	IS-1617-72 FE-330		GALVD.
-	16	-	2	-	-	-	ANGLE	3.15 x 40 x 84	14	IS-5086-92 FE-330			
-	2	2	2	2	-	-	CLEAT	30 x 40 x 340	13	IS-5086-92 FE-330	IS-1617-72 FE-330	*	
2	2	2	2	2	2	2	HEX. NUT	M8	11	IS-1363-67 TAB. 2	IS-2073-62-C-20		GALVD.
2	2	2	2	2	2	2	SPRING WASHER	M8	11	IS-5086-92 FE-330	IS-1617-72 FE-330		GALVD.
2	2	2	2	2	2	2	HEX. HD. BOLT	M8 x 100/80	10	IS-1363-67 TAB. 2&4	IS-2073-62-C-20		GALVD.
2	-	-	-	2	2	2	CLEAT	30 x 40 x 340	9	IS-5086-92 FE-330	IS-1617-72 FE-330	*	
1	1	1	1	1	1	2	FLAT	3.15 x 40 x 340	8	IS-5086-92 FE-330			
2	16	-	-	-	-	2	ANGLE	3.15 x 40 x 84	7	IS-5086-92 FE-330			
-	-	-	-	1	-	-	BRACKET	3.15 x 40 x 468	6	IS-5086-92 FE-330			
-	-	-	-	-	1	-	BRACKET	3.15 x 40 x 598	5	IS-5086-92 FE-330			
-	-	-	-	-	-	-	BRACKET	3.15 x 84 x 340	4	IS-5086-92 FE-330			
1	1	1	1	-	-	1	BRACKET	3.15 x 40 x 424	3	IS-5086-92 FE-330			
4	32	4	4	-	4	-	END LINK	#6.3 x 91	2				**
6	28	6	-	-	-	6	LINK	#6.3 x 93	1				**


NO. OFF	DESCRIPTION & DIMENSIONS	ITEM	REF.DRGs.	MAT. SPEC.	WEIGHT/UNIT	REMARKS
XXVII	GROUP:- 7-1				SUPERSEDED BY	

DETAILS OF CLEATS FOR TRACTION MOTOR CABLES

CAD FILE: ED-CAD\089 7-1-525 1SJ04.DWG

INDIAN RAILWAY
STANDARDS

SHEET
1 OF 1


 INTEGRAL COACH FACTORY
 CHENNAI-38
EMU/M₂-7-1-525

FORM IR A1 600 x 840mm